



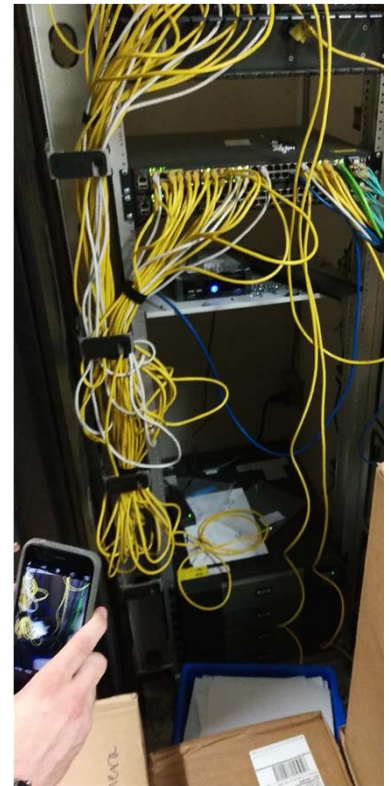
MEASURE L BOND

CONSTRUCTION UPDATE

August 9, 2016

Introduction

The following presentation is intended to provide the Board of Trustees with an update on the progress of Measure L Construction Bond Projects. These are projects that are currently active throughout the District.



Measure L – 2016 Project Overview

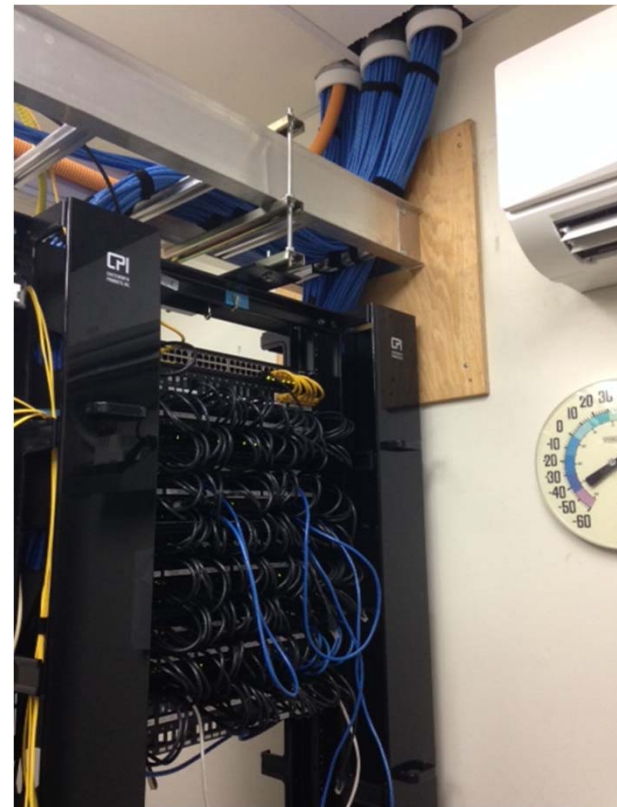
1. Phase 2 Technology Upgrade – Cable
2. Central Kitchen
3. F.I.S./Modernization/Classroom Furniture
 - Noble
 - Northwood
 - Sierramont Middle
 - Summerdale
 - Vinci Park [no F.I.S.]
4. Paving Projects
 - Morrill, Noble, Sierramont, Vinci Park
5. Energy Conservation – Solar



Measure L – 2016 Project Details

1. Phase II Technology Upgrade - Cabling

- Stage I Cabling Upgrades:
 - Unforeseen work causing delays
 - Piedmont, Toyon, Summerdale – near completion
 - Majestic Way – in progress
 - Laneview – potentially delayed, may complete individual wings during Feb. & Apr. 2017 breaks
- Stage II Cabling Upgrades –
 - MOT awarded – Thanksgiving Break
- Stage III Cabling Upgrades:
 - Noble awarded – Winter Break



Measure L – 2016 Project Details

1. Central Kitchen

- Bid – Late August 2016
- Tentative award– October 2016

2. F.I.S./Modernization Projects

- Modernization & class furniture – mostly on schedule
 - Delayed Items:
 - Northwood Façade – start of school
 - Sierramont Chiller – delayed – Sept 2016
 - Sierramont Library Circulation Desk – Late Aug 2016
- F.I.S. – delayed for long lead items
 - Specialty doors & walls: Noble, Sierramont
 - Ceiling treatments: Noble, Northwood, Summerdale
 - Noble Shade Structure
- F.I.S. furniture – order placement pending



Measure L – 2016 Project Details

3. Paving Projects

- Majority of work is complete
- Work areas remaining have heavy loads traveling on them. After that work is complete paving will be completed shortly thereafter:
 - Noble access to FIS – Sept 2016
 - Sierramont east access – Sept 2016



Before

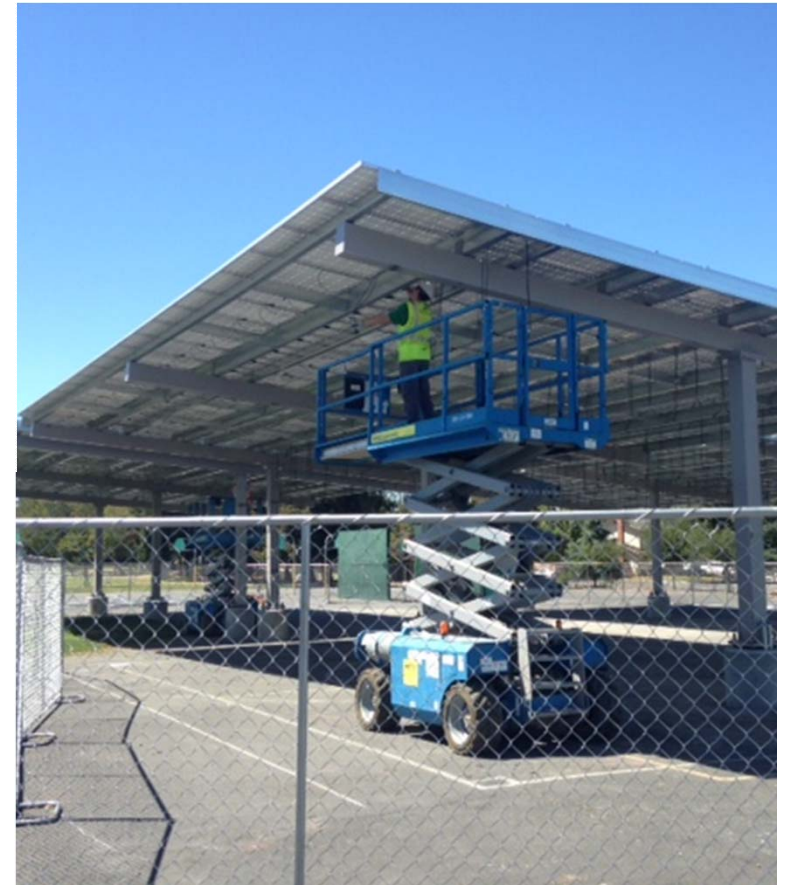


After

Measure L – 2016 Project Details

4. Solar Installation:

- Arrays installed at 7 of 13 sites
 - Completed sites: Cherrywood, Morrill, Noble, Northwood, Sierramont, Summerdale, Vinci Park
- All arrays to be completed by Aug. 18, 2016
- Electrical connection to PG&E:
 - Starts Aug. 2016
 - Completion Oct. 2016



Measure L – 2017 Project Overview

1. Stage IV Cabling Upgrades
 - Brooktree, Northwood, Ruskin, Vinci Park - awarded
2. Central Kitchen
 - Tentative completion – May 2017
3. F.I.S./Modernization/Classroom Furniture
 - Laneview, Majestic Way
 - Vinci Park (F.I.S. only)
4. Modernization/Classroom Furniture
 - Piedmont, Ruskin
5. Pavement Rehabilitation
 - Brooktree, Cherrywood, Majestic Way
 - Piedmont Drop-Off Area (projected)



Construction Projects - 2016

	July				August					September				October				November					December			
	Week				Week					Week				Week				Week					Week			
	1	2	3	4	1	2	3	4	5	1	2	3	4	1	2	3	4	1	2	3	4	5	1	2	3	4
Central Kitchen Demolition																										
Central Kitchen Construction																										
Central Kitchen Equipment																										
Sierramont Chiller Upgrade																										
Sierramont FIS/Modernization																										
Noble FIS/Modernization																										
Northwood FIS/Modernization																										
Summerdale FIS/Modernization																										
Vinci Park/Modernization																										
Paving Rehabilitation																										
Solar Project																										
Furniture																										
Carpet																										
Phase II Technology Upgrade																										
																						</				



Thank You